

Laser marking machine

# FOIL LASER MARKING FOR CUSTOMIZATION





# Easily create prestigious personalized products

Simply enter your text, upload an image and you can accurately and easily transfer your designs onto polycarbonate, acrylic, leather<sup>1</sup> and other plastics.

Easy to use and control, these machines equipped with Class 1 lasers are able to heat transfer Foil metal films onto gifts, promotional items, commercial products and much more. Thanks to our laser marking machines, you will be able to transform ordinary objects into incredible products in just a few minutes.

**Choose the LD-80** for versatile personalization  
Maximum branding area: 80mm (W) x 80mm (D)

**Choose the LD-300** for decorating large objects, including leather

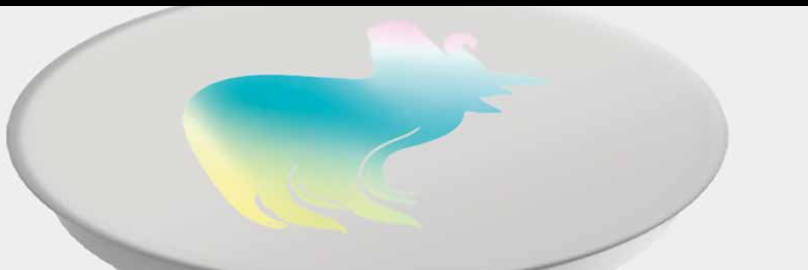
Maximum printing area: for objects with thickness up to 50mm (H):  
305mm (W) x 230mm (D). For objects with thickness up to 216 mm (H):  
281 mm (W) x 213 mm (D)

## LD-300 and LD-80



### Lots of customization opportunities

Pioneers in the personalization industry, the LD-80 and LD-300 laser marking machines open up unique opportunities for your brand, kiosk, online store or personalization business by allowing you to create new personalized objects with vibrant lettering and images. reflective.



Add fun images to personalize electrical accessories.



Personalize gift boxes and packaging.



Personalization of pens, notebooks and other office items.



Use the film of your choice to create stunning designs and personalized phone cases.



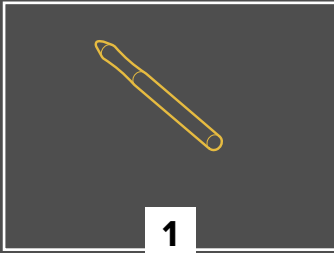
Personalize stationery items like A4 briefcases, notebooks and diaries by adding a name or image.



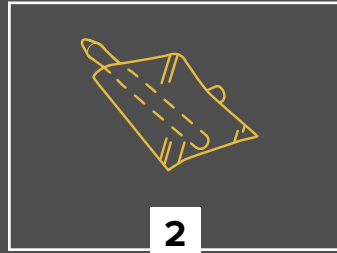
Personalize plastic cards or other items using custom films and variable data management to create exclusive members-only items.

## Create unique personalized products in 4 easy steps

The DGSHAPE LD-80 and LD-300 are incredibly economical and easy to use, thanks to their sophisticated digital process for personalization using Foil film. Compared to traditional methods of film pad printing and hot laser etching, they are a less complex, cleaner and safer choice.



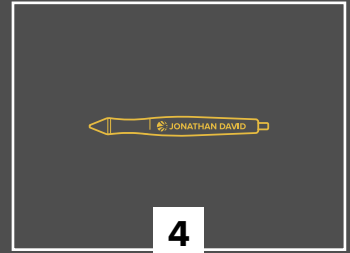
Place your object in the machine



Add the movie



Laser print your creation via METAZAStudio software



Your personalized item is ready to sell

## Main Features



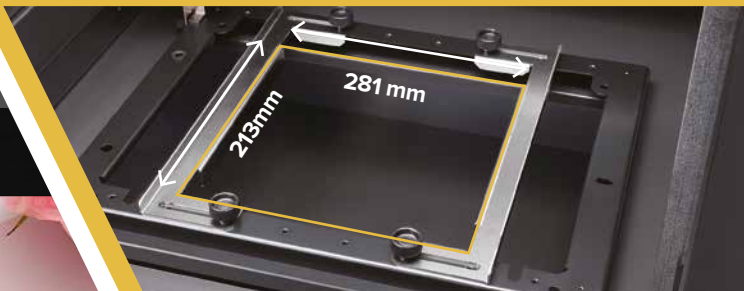
### Metallic film

Inexpensive, Hot Foil films are available in a wide range of colors and types, which can be combined with LD-80 or LD-300 to achieve unique customization results.



### Print directly on natural leather with the LD-300

With the LD-300, it is possible to transfer the film onto soft plastic, paper and leather or print directly onto natural leather<sup>1</sup> for luxurious custom finishes. Create unique, high-precision effects, including detailed images, crisp text, intricate patterns and accurate logo reproduction.

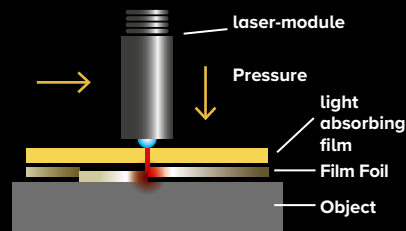


### Extended working area with the LD-300

The working area of the LD-300 measures 305mm x 230mm and can accommodate objects up to 50mm thick. Removing the tray, you can mark even larger objects, up to 216mm thick, such as handbags or packaging, with a maximum printing area of 281mm (W) x 213mm (D). (Photo shows machine with base plate removed).



Personalize lipstick cases and other cosmetics.



### Film transfer onto flexible plastics for precise results

The LD-80 and LD-300 use hot foil laser transfer technology on a large number of heat-resistant flexible plastics including acrylic, polypropylene, polystyrene or ABS<sup>2</sup>. When combined with a high quality transfer film, the extreme precision of the laser makes it possible to create patterns of only a fraction of a millimeter!

### Safety of use

The laser used in the LD-80 and LD-300 meets the safest Class 1 standard\*. When the cover is open, the laser power supply is cut: the machine can thus be used in a sales environment without danger of exposure. In addition, our unique Foil laser marking method does not produce dust or gas. \*IEC 60825-1.



Brand high-value fashion items like sunglasses and easily personalize leather products.



# LD-300 And LD-80

## LASER FOIL MARKING MACHINES



Spécifications		LD-80*	LD-300*
<b>Model</b>			
Compatible materials**		Acrylic, Polycarbonate, Polypropylene, Polystyrene and ABS	Acrylic, Polycarbonate, Polypropylene, Polystyrene, ABS, Leather, Polyurethane, PVC and Paper (Wood Free Paper, Fine Art Paper, Coated Paper)
Maximum Media Sizes	Max.	100 (W) x 200 (D) x 20 (H) mm or 180 (W) x 100 (D) x 20 (H) mm	With tray: 323 (W) x 267 (D) x 50 (H) mm Without tray: 281 (W) x 213 (D) x 216 (H) mm
Design Options		Vector/outline, region fill (line detection, island fill), text, illustration	Vector/outline, region fill (line detection, island fill), text, illustration
Print area	Max.	80 (l) x 80 (P) mm	For objects up to 50mm (H): 305 (W) x 230 (D) mm For objects up to 216mm (H): 281 (W) x 213 (D) mm
	Recommended	50 (l) x 50 (P) mm	For objects up to 50 mm (H): 275 (W) x 196 (D) mm For objects up to 216 mm (H): 281 (W) x 213 (D) mm
Resolution		353 dpi (text), 1058 dpi (vector)	318 dpi (text), 1270 dpi (vector)
direction of marking		One-way or two-way printing (selection using Windows driver)	One-way or two-way printing (selection using Windows driver)
Print speed		24 mm/s	24 mm/s (défaut), 48 mm/s (max)
Interface		USB	USB
Power supply required	CA dedicated adapter	AC 100 to 240 V ±10%, 50/60 Hz	AC 100 to 240 V ±10%, 50/60 Hz
	main unit	CC 19 V, 1 A	CC 19 V, 1 A
Power consumption		About 14W	About 23W
Acoustic noise level		70dB(A) or less	70dB(A) or less
Environment	Temperature	10 to 30 ° C (50 to 86 ° F)	10 to 30 ° C (50 to 86 ° F)
	Humidity	35 to 80% (non-condensing)	35 to 80% (non-condensing)
Dimensions		286 (l) x 383 (P) x 308 (H) mm	616 (l) x 591 (P) x 496 (H) mm
Weight		12 kg	46 kg
Laser source	For marking (foil film transfer)	Laser Class 4*; wavelength: 450 nm; dispersion: 23 degrees; pulse width and repeatability: 167.5 µ sec, 4 kHz; power max. output: 1.6 W	Laser Class 4*; wavelength: 450 nm; dispersion: 23 degrees; pulse width and repeatability: 137.5 µsec, 4 kHz; power max. output: 1.6 W
	for positioning	Class 1 laser, wavelength: 655 nm	Class 1 laser, wavelength: 655 nm
Security devices	Locking	When the cover is open, the power supply to the laser is cut off	When the cover is open, the power supply to the laser is cut off
	Hood	Opaque cover	Opaque cover
Items Included		Software CD, AC Adapter, Power Cable, USB Cable, Installation Guide, Bracket Attachment, Film Attachment, etc.	Software CD, AC adapter, power cable, USB cable, installation guide, stand attachment, film holder frame, etc.

\* This product is a Class 1 laser device, with a safety interlock integral cover structure. Complies with IEC 60825-1 Ed. 3.0 (2014-05) and Ed. 2.0 (2007-03). \*\* Successful transfer of text and images depends on the correct combination of film and media. For best results, test transfer film prior to final production. Specifications, design and dimensions shown are subject to change without notice.

System requirements for USB connection	
Operating system	Windows® 7 or newer (32-bit or 64-bit)
USB cable	Use the included USB cable

### Powerful METAZAStudio software included

The LD-80 and LD-300 are capable of producing dazzling images and crisp text with the included METAZAStudio software. This software is very easy to use: you don't need to be an expert in computer graphics to design and print exceptional images.


### Compatible with cotodesign software

When combined with cotodesign, Roland's new design and print management software, the LD-80 becomes a complete design, order and print solution for personalizing in-store gifts using data. customers, such as the photos or illustrations they have on their smartphones. Other Roland DG3 machines are supported by cotodesign, allowing companies to use it for a wide range of applications and events..

<sup>1</sup>With the LD-80, you can use Foil film transfer to decorate your synthetic leather items. With the LD-300 you can also print directly onto natural leather. Use natural, vegetable-tanned leather for film transfer marking and for pad printing. Other leather treatments may give inconsistent results. Also, please note that synthetic leather cannot be printed directly.

<sup>2</sup>When experimenting with new materials, do so on a "test" piece to ensure satisfactory results.

<sup>3</sup> cotodesign is compatible with the VersaUV LEF/LEF2 range, as well as the VersaSTUDIO BT-12/BN-20, CAMM-1 GS-24, METAZA MPX-90/95, SF-200 and LD-80 machines.

Roland Care Warranty	
	For absolute peace of mind, you benefit from one of the most comprehensive warranties in the industry, included with the LD-80 and LD-300

### The DGS SHAPE promise

DGS SHAPE is the new spin-off company of Roland DG. It benefits from 30 years of experience and innovation of the latter in the field of 3D technology. DGS SHAPE's main ambition, "make innovation, make life better" - is focused on producing digital technologies that bring your ideas to life, revolutionize business processes and shape a better future. Our goal is to merge human creativity with digital workflows to deliver exceptional value across multiple industries, from handcrafting to mass production, in healthcare and beyond. of the.

DGS SHAPE reserves the right to make changes to specifications, materials and accessories without notice. Actual results may vary. For optimum production quality, periodic maintenance of certain critical components may be required. Contact your DGS SHAPE dealer for more details. No warranty other than that explicitly mentioned is given. DGS SHAPE assumes no responsibility for any indirect or consequential damages, whether foreseeable or not, due to defects in these products. All trademarks belong to their respective owners. Three-dimensional data files may be copyrighted. Reproduction of copyrighted material is governed by local, national and international laws. Customers are responsible for complying with all applicable laws and may be held liable for violations. DGS SHAPE Corporation has obtained the license to use MMP technology from TPL Group.



AUTHORIZED DEALER:

IMAGES CHOSEN BY:

